

June 2021

St. Andrew's Place Assisted Living

Spring is well underway, and we are ready to have some fun, all the while still being diligent about keeping everyone safe from COVID.

While the state is opening up more for fully vaccinated people, St. Andrew's, as well as other long term care facilities, are required to follow the Safe Start Plan. Visitors will need to make appointments in order to visit with residents, be screened for COVID symptoms, and will be required to wear their masks at all times. Please, do not visit if you are sick, or experiencing allergy symptoms.

As we transition into summer, we aim to encourage everyone to get outside and enjoy the fresh air. Going outdoors can boost mood, lower stress, and lift spirits. Out on our back patio residents helped with the flower pots and beds, creating a pleasant and inviting hangout spot, and on the hot days we can kick back and enjoy a cool glass of lemonade. In addition, John, our Activity Director, has already begun taking residents out on fun day trips to the parks and beaches.

COVID still provides us with many challenges to get through, namely finding new employees and raising funds to cover the 'extras.' We are in urgent need of a maintenance person, or at the least a few volunteers for now, to help with the outside work and maintaining our campus.

We are looking forward to COVID being over soon, so that we can get back to normal. And we offer our thanks to our fabulous and dedicated employees who have stuck with us through this all.

Take care,

Laura Dodd
Administrator

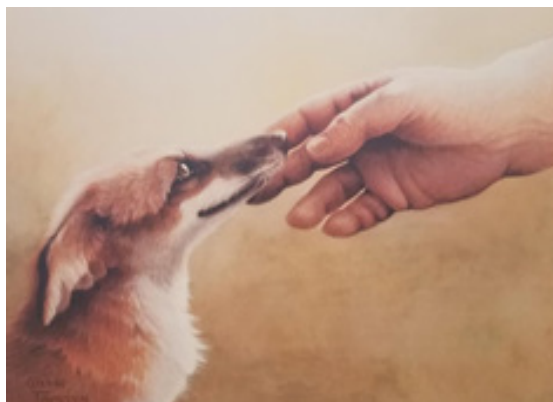
This Past Month



Meet Pat

When you look at our residents you may see gray hair, wrinkles, and walkers. We see a canvas of history and a life full of stories. Our resident Patricia Taynton is one of those canvases.

Her passion for art started at the age of 4 years old. She graduated from Moore College of Art in Philadelphia where she also taught a course on “The Animal in Art” at the Philadelphia Art Museum. She has spent years creating life-like animals. Her primary subjects are horses and wildlife depicted in watercolor, tempera, gouache, and acrylic. In her art you can see how she enhances her subjects with the extra dimension of spirit and individuality.



You can find her work exhibited in the United States, Europe, and Middle East. She has been commissioned by the Franklin Mint, Defenders of Wildlife, and The World Wildlife Fund. Her work has been used by the National Wildlife Federation in its stamp series. She has won numerous awards in equine and wildlife competitions as well as in photography. She received the best in show award at the Equine Art Show in 2003 and her art was chosen twice for the Lavender festival in 2009 & 2011.

Pat joined our family in 2019 with her dog Dahli. Dahli has been Pat's lifelong paw partner for the last 15 1/2 years. Since their 2 years here at St. Andrews, Dahli has brought a sense of calmness to the residents with her lovable personality and Pat has brought a talent to us that we could have never imagine. She has taught art classes, helped others out with projects, and has started her lifelong passion teaching Tai-Chi every Tuesday to the other residents. Pat and Dahli look forward to spending several more years with us and starting their new journey teaching Tai-Chi.



So, the next time you walk our halls, maybe you too will see the canvases that walk next to you. The history that shines off of them and the stories that fill those canvases to their edges. We are not just wrinkles and grey hair, we are a whole lot more than just that. We are the history and the life that keeps writing a story.

The Costs of Assisted Living

It can be a real struggle, physically, mentally, and emotionally, to care for someone at home, yourself.

This is where assisted living communities play a role. They are not for everyone, but for those who need help with daily tasks, it can be a welcome relief.

At St. Andrew's Place, we do more than just taking care of a seniors' physical wellbeing. We design and implement activities that can enhance the well-being of our residents, through diverse physical, intellectual, and cultural programming. Individual areas of interest are considered during our activity and event planning, and as such, the monthly calendar is always changing. Our Activities Director is ever on the hunt for that which will keep our residents engaged.



But what about the cost? Depending on what level of care your loved one needs, assisted living can be much more affordable than long-term in-home care or nursing home care. The monthly rates for assisted living communities can vary widely depending on the location, amenities offered, level of care required, and other factors, and they typically range, nation-wide, from \$3,000 to \$6,690 on average.

St. Andrew's Place is an affordable option for many reason. Our fee structure is set – no nickeling and diming a person for services provided – the monthly fee includes everything we offer for the level of care. We acknowledge that there are many people out there who require assisted living, but currently live on limited means. With this in mind, we accept a wide variety of payment sources, not just private pay or insurance, but also programs such as VA benefits or Medicaid.

Here at St. Andrew's Place, we know the struggles life can pitch us, that things can become even more complicated. That's why we have never asked anyone to leave for an inability to pay. We care for you, and for your loved ones. So if the time comes, when assisted living is needed, give us a call, we are here to help.



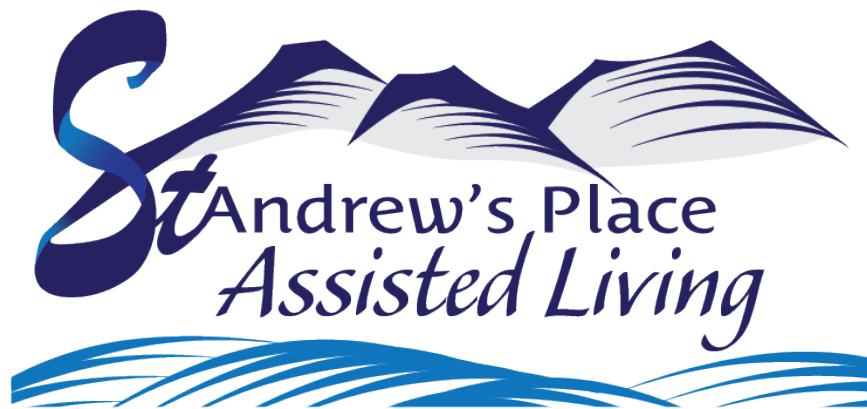
Oktoberfest is coming back!

We missed out last year because of the pandemic, but at the current pace, we should be well into the clear when it rolls around this year!

We are planning to keep it a slight smaller affair than normal, but we hope to see you all there!

St. Andrew's Place

Assisted Living



520 E Park Ave
Port Angeles, WA 98362
(360) 417-3418
www.standrewsretirement.org



Contact Information

Laura Dodd: Administrator
standrew@olypen.com

Sonya Hartig: RN
stapnurse@olypen.com

Beverly Maine: Episcopal Retirement Communities ~ CEO/President
erc-ceo@donobi.net

Melissa Muck: Director of Food Services
stapcook@olypen.com

Christina Owens: Office Manager
stapoffice@olypen.com

John Ozimkowski: Activity Director
stapactivity@olypen.com